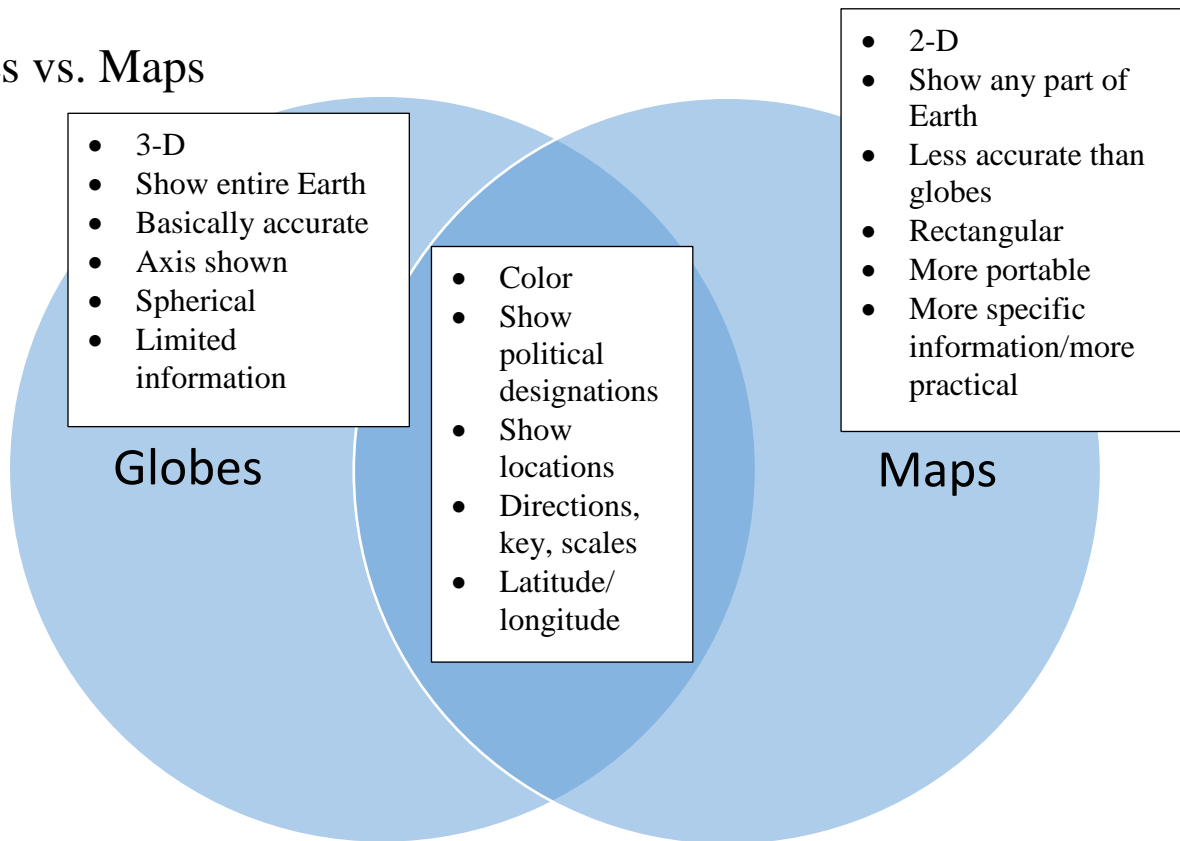


Maps Vocabulary & Concepts

Globes vs. Maps



• Latitude & Longitude (30°W Lon., 50° S Lat.) (-30, -50)

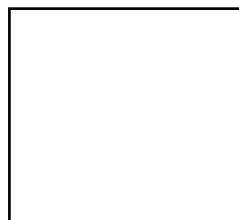
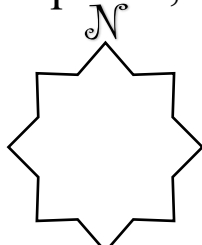
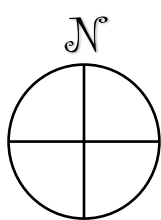
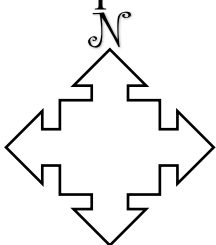
Latitude: horizontal

- Equator: (x-axis): 0°
- go to 90°N & 90°S

Longitude: vertical

- Prime Meridian: (y-axis): 0°
- go to 180°E & 180° W

Compass Rose: at least 4 points, North labelled with "N"



← Draw your own compass rose.